

Crown Homes Ltd.



136 Warrington Road

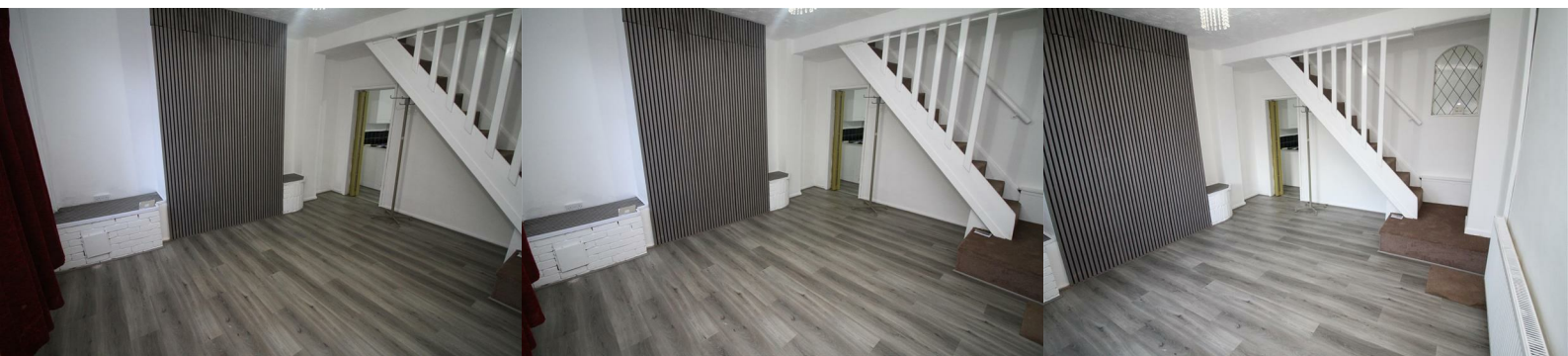
, Wigan, WN2 5QH

£750



Crown Homes are delighted to present a Mid Terraced Two(2)Bedroom House in Abram Area of Wigan. The property comprises of porch, living room, diner kitchen and utility room. Whilst the top floor comprises of a double room, single room, bathroom and toilet. The property benefits from Upvc double glazing window, central gas heating, carpet flooring. Good transport link to Wigan town centre and leigh. Proximity to schools , surgery and stores. Ideal for family.

Call us today to arrange viewing.



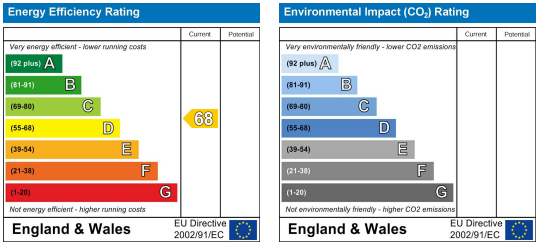
Area Map



Floor Plans



Energy Efficiency Graph



These particulars, whilst believed to be accurate are set out as a general outline only for guidance and do not constitute any part of an offer or contract. Intending purchasers should not rely on them as statements of representation of fact, but must satisfy themselves by inspection or otherwise as to their accuracy. No person in this firms employment has the authority to make or give any representation or warranty in respect of the property.